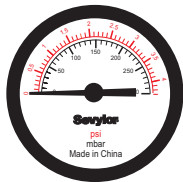


CLEAR BLUE HAWAII

INSTRUCTIONS FOR THE MANOMETER (Pressure Gauge)

This manometer will allow you to check the pressure of your Clear Blue Hawaii boat / kayak. The required pressure is specified on the capacity plate printed on your boat / kayak.

WARNING : always use the manometer to prevent overinflation which will definitely damage the boat.



The manometer is graduated in millibar (mB) : 0 to 300 mB, and PSI : 0 to 4 PSI.
For your information : 100 mB = 0,1 bar.

The manometer is supplied with 2 screwable accessories ; use the accessory which fits the valves of your boat.



Fitting for Boston valve
(screwable valve)



Fitting for push-in valve

Boston Valve (screwable valve)



1. Screw the fitting onto the manometer.
2. Insert the manometer into the valve, rotate it slightly until the metal pin slides into one of the holes ; then insert it completely.
3. Once the manometer is well positionned, the pressure level is indicated on the face of the manometer.
 - In case of overinflation, deflate the boat by taking out slightly the manometer to evacuate some air from the chamber. Measure again the pressure.
 - Repeat this step until you reach the recommended pressure level.
 - If your boat is not inflated enough, remove the manometer and inflate progressively your boat again. Measure again the pressure.
 - Repeat this step until you reach the recommended pressure level.

Push-in Valve



1. Screw the fitting onto the manometer.
2. Insert the manometer into the valve until the valve is completely plugged up.
3. Once the manometer is well positionned, the pressure level is indicated on the face of the manometer.
 - In case of overinflation, deflate the boat by taking out slightly the manometer to evacuate some air from the chamber. Measure again the pressure. Repeat this step until you reach the recommended pressure level.
 - If your boat is not inflated enough, remove the manometer and inflate progressively your boat again. Measure again the pressure.
 - Repeat this step until you reach the recommended pressure level.

WARNING : never exceed a pressure level of 100 mB in the air chambers equipped with push-in valves.

